

966

march-april

ol. 25, no. 2

WHEELABRATOR

PARADE



COVER STORY ON PAGES 10 AND 11



What is "Overhead" and what are its effects?

We sell our products in a buyer's market. That is to say, a buyer has the privilege of selection from a range of manufacturers in any one field. When the products available are relatively comparable in quality, the buyer ordinarily will purchase the lower priced unit. Therefore, it is necessary that we maintain competitive selling prices. To do so we must consider our direct costs of production as well as those costs which are not directly related to producing the item.

These indirect costs are classified as OVERHEAD. Specifically, these costs include salaries of persons not directly related to the production of an item, rent, taxes, insurance, maintenance costs, lighting, heating and depreciation.

Unlike production costs, overhead cannot be allocated to any specific product or machine. Its cost, therefore, must be pro-rated to everything produced in our plants.

A direct relationship exists between costs and profit . . . the lower the cost the higher the profit . . . and the higher the cost the smaller is our margin of profit unless we raise our selling prices. There is a limit to which prices can be raised, however, because in our highly competitive markets prices that are too high normally result in lost orders.

Since our selling prices must be competitive and still enable us to receive a fair profit for our efforts, all manufacturing and non-productive costs (OVERHEAD) must be kept at the lowest possible level.

By decreasing operating costs and maintaining our sales volume, we will be assured of a healthy, growing Wheelabrator Corporation Employees' Savings and Profit Sharing Plan.

James F. Connaughton

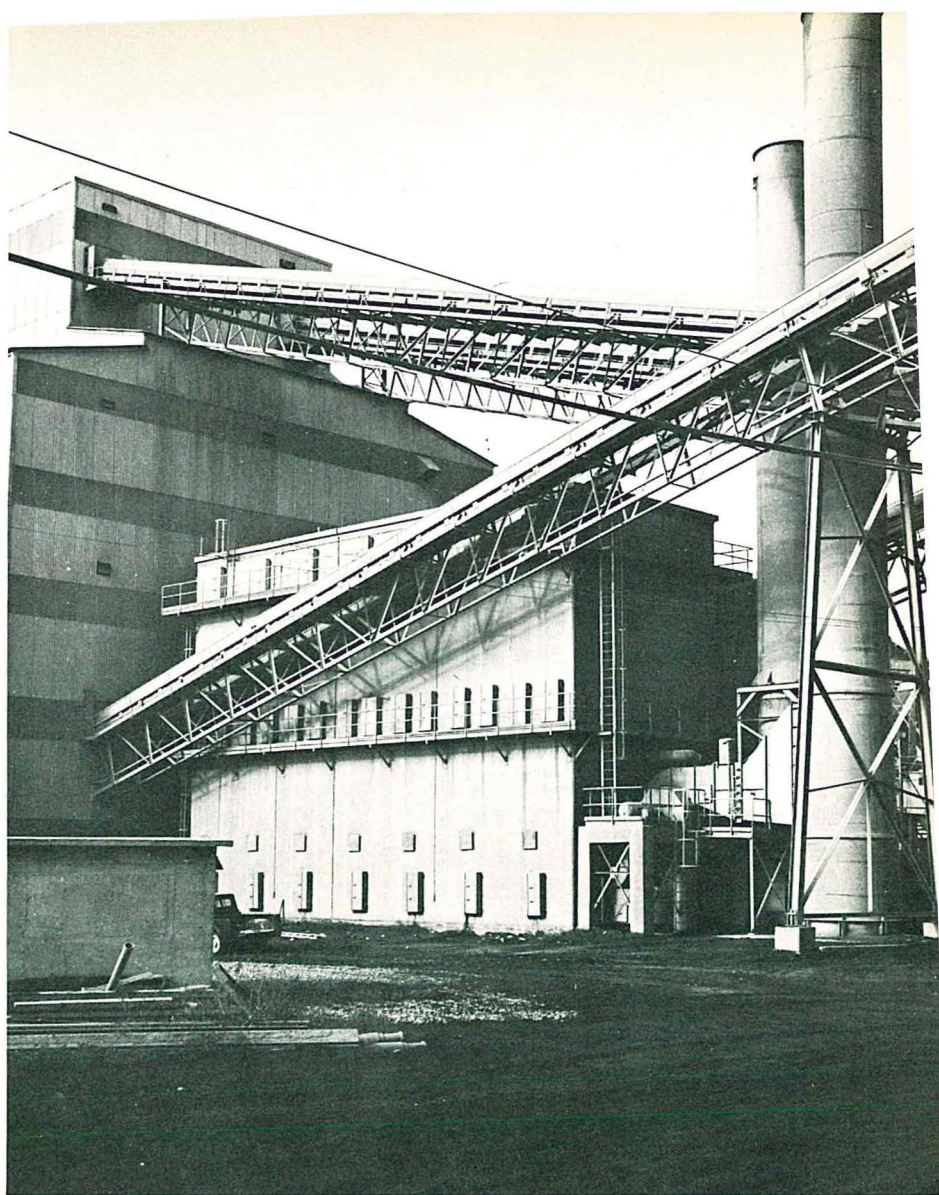
President

VITAL VALUES
W
FOR INDUSTRY

WHEELABRATOR
PARADE
Vol. 25, No. 2 March-April, 1977
Editor — Merle D. G
Published
Employees of The Wheelabrator Corporat
Mishawaka, Indi

Wheelabrator Filters Cement Dust From Air

The Wheelabrator Dustube Dust Collector, above, filters cement dust from a kiln at the Huron Portland Cement Co., Alpena, Michigan.



Time was when passersby could recognize a cement-producing plant by the dust that permeated the atmosphere around the plant. But this is no longer true with progressive cement manufacturers like Huron Portland Cement Company, Alpena, Michigan.

Thanks to three Wheelabrator Dustube Dust Collectors, dirty air from two kilns and a dryer is filtered so that there is no noticeable trace of dust in the air from these units at the Michigan plant.

At the time the equipment was sold, it was the largest order ever received by the Dust and Fume Control Division.

Also unusual is the method of construction. For

the first time our engineers developed an all-concrete housing for the filter elements in all three collectors. The customer dictated the use of concrete because of the high humidity present in the kilns and dryer the collectors are ventilating.

All of the Wheelabrator equipment at Huron Portland has been in operation for about six months . . . and it has been extremely effective. 100 per cent of the dust emanating from the kilns is less than 1/25,000th of an inch in size and 80 per cent of the dust collected from the dryer is less than 1/2,500th of an inch.

High efficiency, reliability and low maintenance costs have made these dust collectors popular with officials at Huron Portland Cement Company.

MARKETING — *Identification and Satisfaction*

Among companies selling to industry, the processes of sales and product distribution have become vastly more complex in recent years.

New technology is being introduced to and adopted by industry at an ever-increasing pace, obsoleting existing methods and necessitating a constant search for new applications of existing products and new products to fill emerging needs.

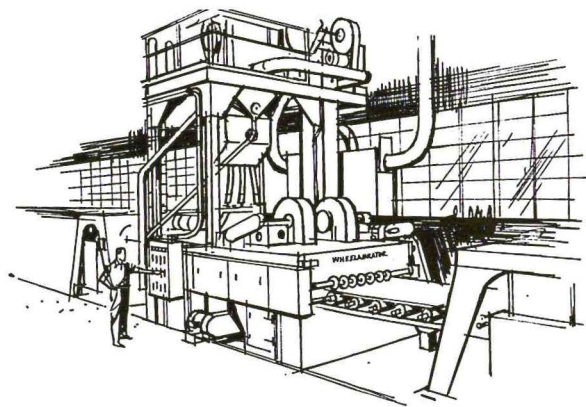
Recognizing the opportunities inherent in the quickening tempo of technological development, Wheelabrator has adopted an aggressive attitude toward market development and product planning. To coordinate all functions associated with the identification and satisfaction of customers' needs, a Marketing Department was created during 1965. F. John Pichard, Vice President of Marketing, is in charge of the department.

MARKETING FUNCTION BROAD IN SCOPE

Broadly defined, the function of marketing includes collecting, analyzing and distributing all information about our customers and our products.

With Wheelabrator, as with many other industrial concerns, a substantial portion of today's sales comes from products which did not exist in their present form only a decade ago. Rubber deflashing,

structural steel cleaning, combination core knock-out-blast cleaning, and precision vibratory metal finishing are some of the applications introduced by Wheelabrator within the past decade.



FUTURE LIES IN PRODUCTS NOT YET KNOWN

Similarly, much of the future growth and prosperity of our company lies with processes and markets that are not now known. To find these opportunities, identify customer needs and fill them profitably, the Marketing Development engages in an active market research program and closely cooperates with design and development activities.

IMPORTANCE OF COMMUNICATIONS

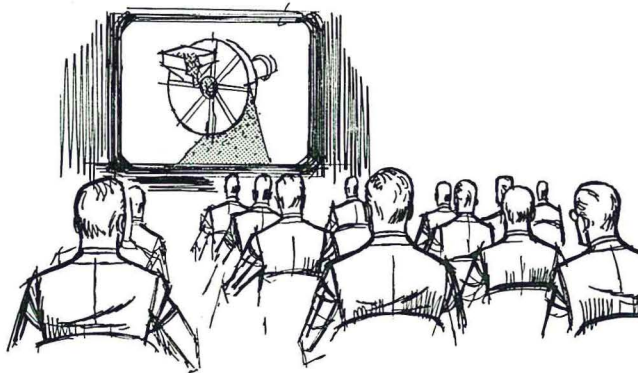
With equal concern for maintaining and strengthening the company's position in today's competitive markets, a two-pronged program involves keeping our sales force as well as customers and prospects informed of equipment design features, product performance and application information, and new developments.

Trade shows, for example, provide an opportunity to display and demonstrate products to a specific market audience. At the same time, shows



of Customer's Needs

permit face-to-face discussion with prospective customers, many of whom are inaccessible to field sales representatives at other times. Wheelabrator will participate in 13 such exhibits during 1966, representing blast cleaning, air pollution control and vibratory finishing equipment. The Balcrank Division will be represented at 12 national and regional exhibits.



MOVIES AID SALES, TRAINING, CUSTOMER EDUCATION

Wide use is also made of audio-visual communications with customers and prospects. Wheelabrator has produced some 14 movies for use in field sales work, sales training and customer educational meetings.

Wheelabrator personnel also participate in activities of technical and industry groups, including presentation of papers at meetings of such technical societies as the American Foundrymen's Society, the Industrial Gas Cleaning Institute, American Institute of Steel Construction and many others.

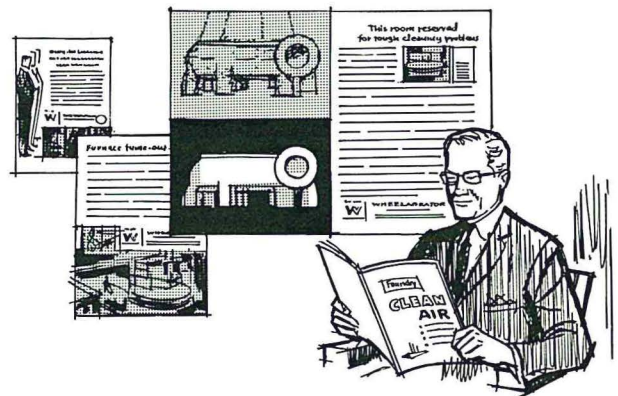
Forums on air pollution conducted by Wheelabrator in Chicago and New York during 1965

brought wide exposure to Wheelabrator as a major factor in pollution control and generated extensive editorial comments in important trade and business publications. A similar press conference to introduce mechanical rubber deflashing to the industry played an important role in the rapid development of this market over the past four years.

ADVERTISING — A VITAL MARKETING FUNCTION

With the multiple markets served by Wheelabrator products, the ever-expanding number of customers and prospects and the ever-increasing number of buying influences within each customer or prospect firm, a continuing program of advertising and sales promotion is a vital element of the total marketing effort.

Wheelabrator maintains its position of leadership among its competitors in this area as well, with a well-balanced program of advertising and many other promotional activities. Geared to the requirements of products and markets, Wheelabrator advertising is closely coordinated with the objectives of marketing management to assure maximum effectiveness.





Vincenti Maldonado, center, an engineer with Wheelabrator de Mexico, returned home in March after spending a six-week training period in Mishawaka. Shown with him are James L. Hesburgh, left, Vice President of International Operations, and George F. Wilkins, Export Sales Manager.

NEWS

PERSONAL GOALS 9.7 second De- ac- 1.4. F ha st a apol in t fourth in t 220 in the s During len ran t with a st but it v both in yet to win t y he 00 an camp 00 9.8 at h he only

AN



Geri Seeley, decorations chairman for the annual Julianna Club card party, April 21, shows one of the decorations to others on the committee. Seated, left to right, are Wanda Stutzman, general chairman, and Donna Hums, co-chairman. Others standing, left to right are, Norma Crider, tickets; Anne Claeys, refreshments and Lorraine Banicki, door prizes. The event will be held at the Knights of Columbus Hall in South Bend.

Balcrank Division exhibited during February at the Automotive Service Industry Show in New York City.





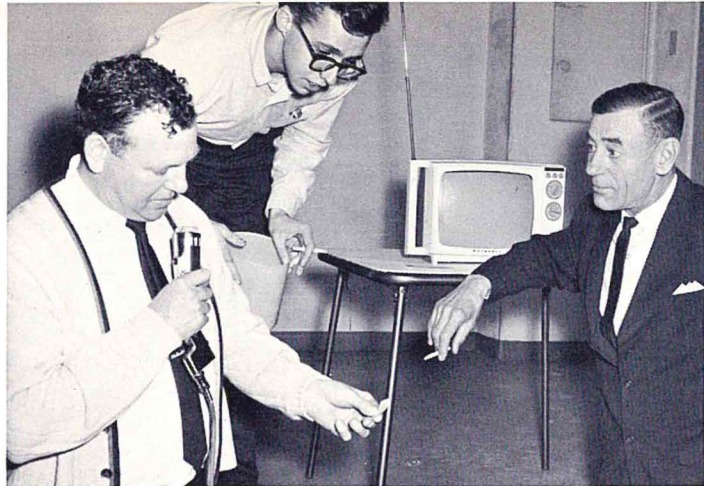
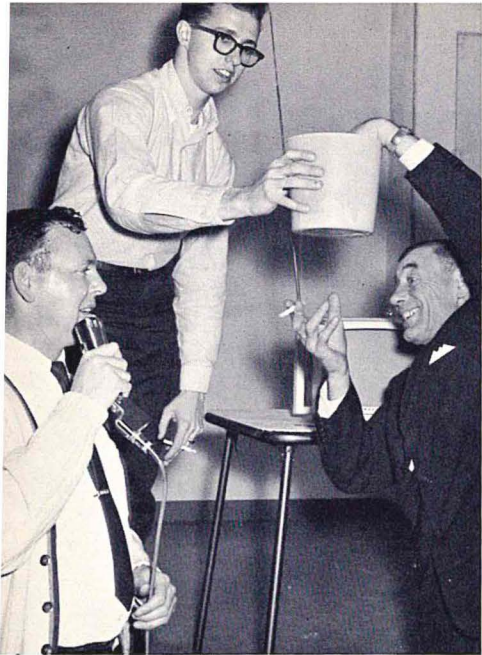
Tom Bodle, center, vice president of the Wheelabrator Corporation Athletic Association, checks the identity of passengers as they enter one of the four buses that took employees to see a Fort Wayne Hockey game in February.

NEWS

Thirty-one customers representing firms in six states and Mexico attended a Wheelabrator Customer Service School, January 16 and 17.



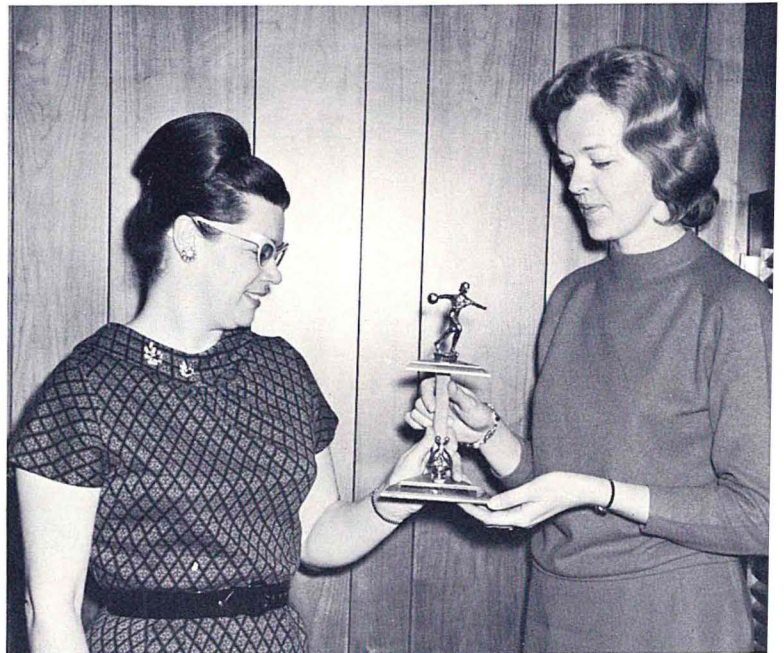
Glenn T. Fulmer, seated left, president of Local 995 UAW-AFL-CIO, reviews organizational details with members of the union bargaining committee. Others seated are Howard Snyder, center, vice president and Calvin Kelly, Foundry and Maintenance representative. Standing, left to right, are Herman Mitchell, Machine Shop; LeRoy Byrd, night shifts; Tom Lewis, Plant 2; Edward Hixenbaugh, Steel Shop and Jimmie Jefferies, South Shipping and Stockroom.



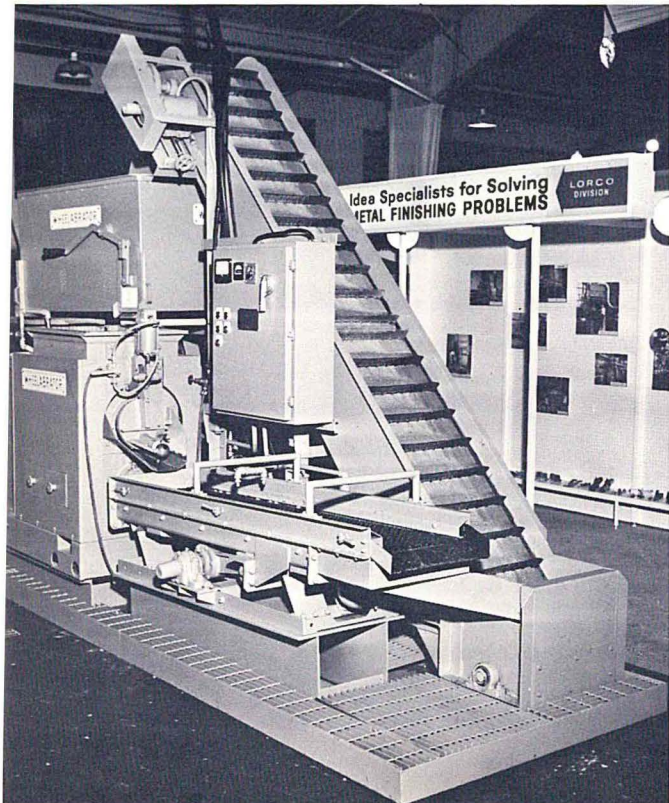
Scenes from the Athletic Association Stag, March 12, at the Broederenkring Club in Mishawaka — (left) Art Soens, BK president, reaches for the winning ticket for the television set that was given away as Al DeGeeter, left, AA president, and Tom VandeWalle, board member, watch . . . (top) DeGeeter and VandeWalle double check the name of the winner which happened to be Chuck VanBelleghem shown in bottom photo with the TV he won.

NEWS AND VIEWS

CONTINUED



Delores Burtsfield, AA secretary, presents a trophy to the winner of the women's singles division, Mrs. Wayne Clements.



This 4 cubic foot batch type Vibratory Finishing System was the highlight of the Lorco Division's display at the Western Metal and Tool Exposition held in Los Angeles, California in March.

Bowling Teams in Tight Race

Bowling remains the most popular sport at Wheelabrator with one out of every ten employees participating.

Although league play will continue for a few months yet, a mid-season Sweepstakes has been held under sponsorship of the Wheelabrator Corporation Athletic Association. Sweepstakes results pointed up a good deal of talent and officials are expecting a photofinish contest at the season's end.

The Methods & Planning team won the Team Sweepstakes with a 3025 series. On the winning team were L. Stewart Whitney, S. A. Hearrell, James Fogel, John Vaselin and Russell Wade.

Second, third and fourth place teams came within points of either losing their ranking or nudging another team out of its rank. These teams bowled series of 2969, 2967 and 2963. The fifth place team bowled a 2932 series.

Members of these teams were James Keogan, Tom Bonney, Mike Hillebrand, B. Farrell and Stan Bober, second; Richard Cukrowics, Joseph Weinkauff, Robert Lewis, Jerry Pratt and Robert Pherson, third; William Roe, Glenn Britton, Tom Crider, Harold Mayes, and Joseph Kring, fourth and Everett Buss, Henry VandeWalle, Larry Raker, Hubert Hoefle and M. Phillips, fifth.

In doubles competition, first place was won by Robert Pherson and Dale Hartz with a 1341; second, Leo Hess and Harry Rutkowski, 1308; third, Don LaPlace and Clarence Soens, 1287; fourth, Dave Heironimus and Gene Sobiech, 1286 and fifth, Tom Crider and Ed Walesiwiecz, 1285.

Richard McConahay won the singles trophy by bowling 813. Other singles winners were George McNeile, second, 700; Clarence Soens, third, 696; Jerry Bach, fourth, 692 and Gene Sobiech, fifth, 687.

The all-events trophy was won by Gene Sobiech. He amassed a total of 1973 points. Other all-events winners were Cal Barnes, second, 1966; Harold Mayes and Jerry Bach, tied in third place, 1927 and Stan Bober, fifth, 1904.

The Women's Division of the Sweepstakes was won by Jane Clements, with 530. Other winners in this category were Delores Burtsfield, second, 520; Mary Helen Driver, third, 513; Norma Crider, fourth, 506 and Martha Heston, fifth, 500.



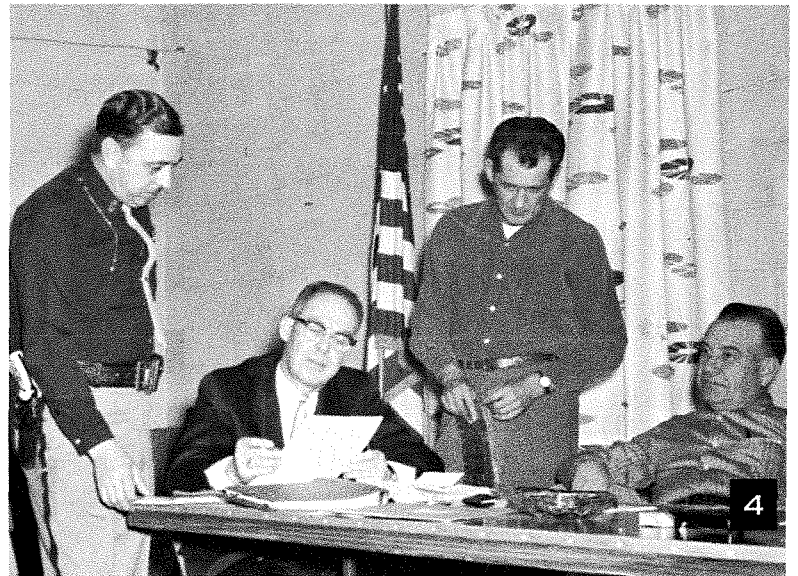
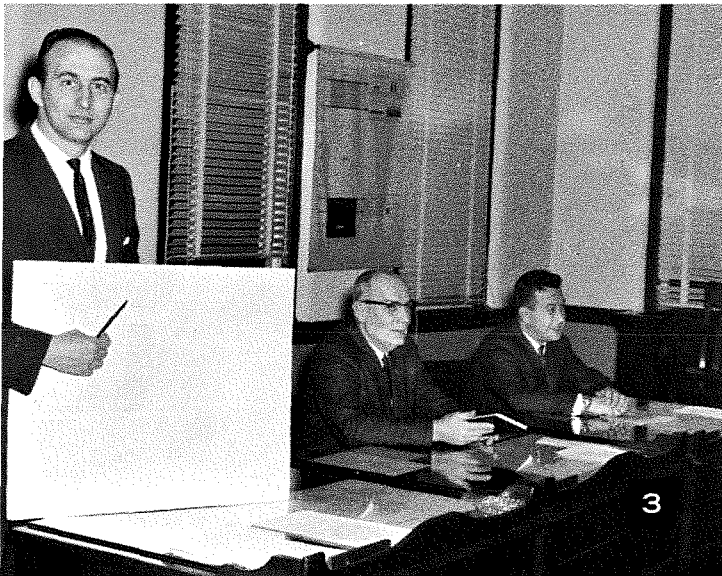
Richard McConahay, men's singles winner, accepts his trophy from Ray Celie, co-chairman of the Sweepstakes.

Team winners posing with their trophies, left to right, are S. A. Hearrell, Jim Fogle, Stewart Whitney, John Vaselin and Russell Wade.



Dale Hartz, left, and Robert Pherson, center, show the trophies they received as doubles winners. Pictured at the right is Gene Sobiech, all-events winner.





1. President James F. Connaughton served as chairman of the recent St. Mary's Academy Development Drive. He is shown at the right with Sister M. Angela Merici, C.S.C., Principal of Saint Mary's and Julius E. Tucker, co-chairman of the drive. 2. Margaret Sawyer, left, secretary to L. L. Andrus, Vice President, recently traveled to Washington, D.C. with Mishawaka city officials to accept a trophy won by the city in a national Paint Up — Clean Up — Fix Up Campaign. Miss Sawyer and Mayor Margaret Prickett hold the trophy presented at White House ceremonies by Mrs. Lyndon B. Johnson. 3. Pointing to a proposed zoning change is City Councilman Ernie Culp, Plant 2 Production. Culp serves on the Mishawaka City Council as a representative of the city's second district. 4. As town clerk in Osceola, Fred K. Baldauf serves as secretary of the Osceola Town Board. Seated at left, he confers with the town's police chief during a recent meeting. At Wheelabrator, Baldauf is Manager of Special Blast Equipment Sales. 5. Ralph O. Holderman operates a crane in the Steel Shop on weekdays. But on Sundays and during evening services, he is in the pulpit of the County Line Assembly of God Church near Bremen. Holderman is the church's full-time minister.

Thirty-three years of public service as volunteer firemen are represented by the three Wheelabrator employees on our cover. Pictured at right, from left to right, they are Norman Burch, night welding foreman; Gerald Hall, Plant 4 production and Charles McConahay, a Stockroom employee. Burch has served 21 years with the Howard Township force near Nilis, Hall seven years with Centre Township force and McConahay five years with Harris Township force.

Civic-Minded Employees

Companies, like the persons they employ, have certain obligations to the community in which they are located.

Wheelabrator fully recognizes its role as a corporate citizen and has responded over the past year with generous contributions to many fund drives for the benefit of the community.

Wheelabrator feels fortunate that its employees, too, do their share. Many persons throughout our plants and offices are active in a wide variety of organizations which are dedicated to the public good.

A complete recital of the civic activities of each employee would be impractical. So we

have listed examples of types of activities engaged in by our employees. Each, in his own way, is making the community a better place to live.

James F. Connaughton, President, serves as chairman of the Advisory Board of Saint Mary's Academy. He is a member of the Board of Directors of St. Joseph Hospital and of the Advisory Council for the Liberal and Fine Arts at the University of Notre Dame. He is also a trustee of the Stanley Clark School and of LaLumiere School.

Below is a list of organizations in which Wheelabrator employees are actively involved:

AMERICAN FIELD SERVICE, MISHAWAKA CHAPTER, *Robert E. Schalliol, president; Ray S. Steele.*

AMERICAN RED CROSS, *Alden E. Lenbard, member, Board of Directors.*

UNITED COMMUNITY SERVICES, *James E. Donlan, chairman, Corporate Division.*

KIWANIS CLUB, *Ray S. Steele, Robert E. Schalliol, Hardy Stebbins.*

YMCA, *Hardy Stebbins, Myron Yoder and Harold F. Schulte, members, Board of Directors.*

CAMPFIRE GIRLS, *Paul Myers, member, Board of Directors.*

CHAMBER OF COMMERCE, *Paul H. Setzler, John G. Farabaugh, Don Rimpler, Ray S. Steele.*

CHAMBER OF COMMERCE (WOMEN'S DIVISION), *Anna C. Sawyer, Florence Duncan.*

CHRISTIAN RURAL OVERSEAS PROJECT, (CROP), *Mary Catherine Stebner, St. Joseph County Secretary.*

ROTARY CLUB, *Stanley Krzeszewski, Past President, Stuart Whitney, G. D. Dill.*

LITTLE LEAGUE, *Clyde Hickman, George H. Scott, Jr., Joe Kring, Harold Mayes, Ray Celie, Don Karnes, John Lang.*

CIVIL DEFENSE, *Andy Conklin.*

VOLUNTEER FIREMAN, *Jerry Hall, Charles McConahay, Norman Burch.*

POST 360 DRILL TEAM, *Matt Rutkowski, Jack Biggs.*

CRIPPLED CHILDREN AND ADULT SOCIETY, *Florence Duncan, Board of Directors.*

BOY SCOUTS, *Bill Stauffacher, Dragoon Trail District Roundtable Commissioner and Jim Marsh, Assistant Commissioner.*

UNITED FUND, *Robert Pherson, Robert E. Schalliol, Ray S. Steele, Howard Snyder.*

ST. VINCENT DE PAUL SOCIETY, *Ray Leliaert, A. E. Lenbard, George McNeile.*

OSCEOLA TOWN BOARD, *Fred Baldauf.*

MISHAWAKA CITY COUNCIL, *Ernie Culp.*

PRECINCT COMMITTEEMEN, *C. V. Kelly, Florence Duncan, John Harris.*

MISHAWAKA PUBLIC LIBRARY BOARD, *Margaret Sawyer.*

JAYCEES, *George Mathewson.*

EXCHANGE CLUB, *Phil Jordan, Richard Fenska.*



Construction Begins on \$2,844,000

Construction has begun on two new buildings which are to be completed by the end of 1966. The total cost of the buildings along with new machinery and equipment will be \$2,844,000.

The expansion announcement was made by President James F. Connaughton in February. He also announced at that time that the \$1,420,000 expansion program begun in 1965 would be completed during March.

One of the new buildings will be a 28,800 square foot structure to house expanded fabrication and erection activities in the Steel Shop. It is being added to the north of the present fabrication section of the Steel Shop.

The other building, with an area of 76,800 square feet, will be added to the east of the recently-completed Machine Shop addition. It will be used as a storage area and for the fabrication of light equipment.

Mr. Connaughton also announced that these expenditures by Wheelabrator Corporation are part of a continuing program designed to provide the capacity to handle double the company's output by 1968. Tentative plans call for the construction of a new foundry in 1967 and another structure for additional fabrication space in 1968, he said. The over-all expansion program is expected to cost more than \$10 million through 1968.

In making the announcement, Mr. Connaughton said that "the new expansion program upon

which we are embarking is necessitated by the increased business that we have been doing and expected business expansion in the future."

W. W. CRISWELL DIVISION BUILDING CALIFORNIA PLANT

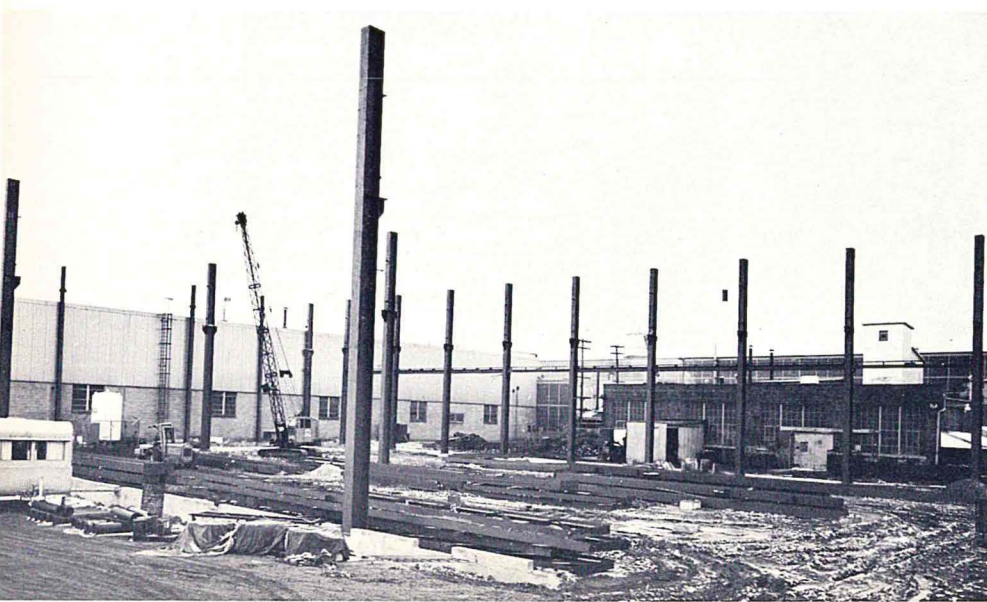
The W. W. Criswell Division of Wheelabrator Corporation is building a new plant in Riverside, California, for the manufacture of cloth filters for air pollution control systems and plastic products for wet filtration systems.

The plant will provide the Criswell Division with a manufacturing and distribution center to serve growing business requirements on the west coast. Construction has begun on the 100 ft. by 120 ft. facility which will be in operation by May 1.

Formed in 1961, the Criswell Division also operates a plant in Riverton, New Jersey for the manufacture of all types of fabricated bags and blankets for filtering solids from gas or liquid streams. These items are supplied to many industries principally in the cement, chemical, steel, carbon black, mining and non-ferrous metals field.

NEW CANADIAN FACILITY ADDED BY BARRDAY LTD.

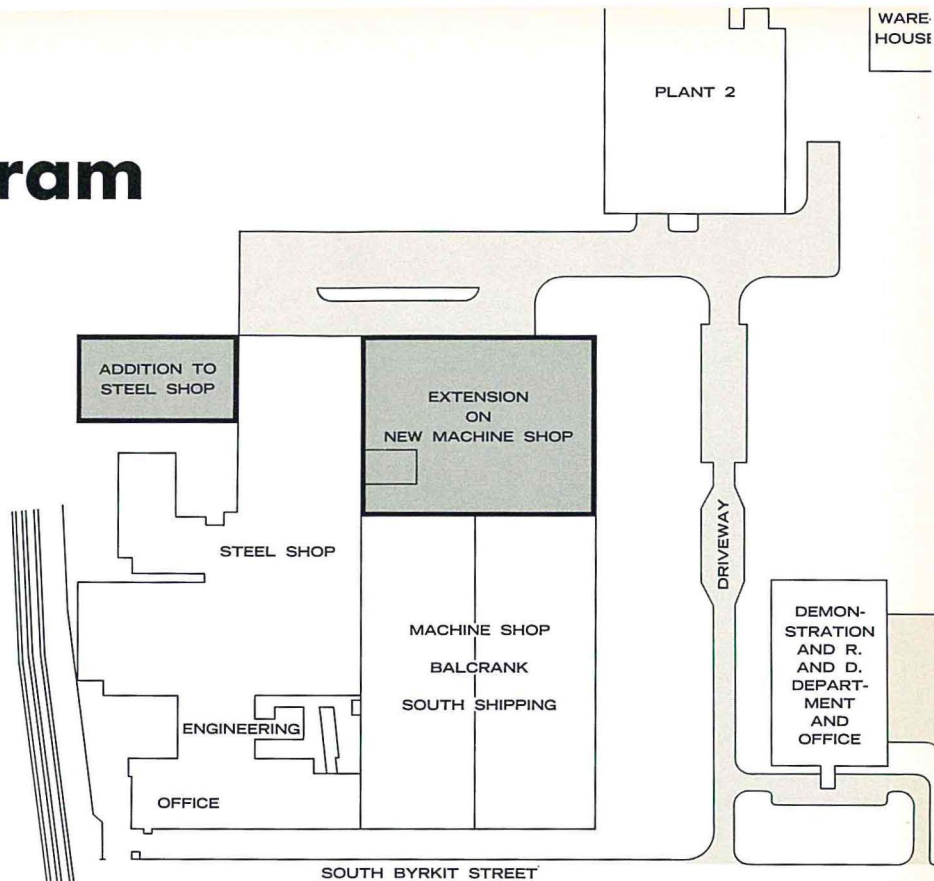
A sizeable expansion in business and expectations of greater future growth have led to an expansion of the facilities of Barrday Ltd., a sub-



Structural steel for the new addition to the north of the Steel Shop began going up in March.

Expansion Program

The drawing (at right) shows the layout of the present plant with the proposed improvements in the darkened areas.



subsidiary of Wheelabrator Corporation located in Galt, Ontario.

It involves the building of a new manufacturing and office facility near the existing plant. The new building will include 25,000 square feet of manufacturing space and 3,000 square feet of office space.

The firm's weaving and auxiliary equipment sections will be housed in the new plant. This

will allow the expansion of the sewing department to the section of the present plant occupied by offices and a warehouse. The area now used for weaving and auxiliary equipment will be used as a warehouse and for bag fabrication operations.

Barrday, manufacturer of a broad range of filtration media used in air pollution control equipment, was acquired by Wheelabrator in 1964.

We knew him when



EDWARD J. HUEMMER

Edward J. Huemmer is now payroll supervisor in the Controller's Division. He started working at Wheelabrator in 1942 as a mail clerk.

After working a year, he was called into the service. When he returned to Wheelabrator in 1946, he was placed in the Payroll Department. He later became Payroll Supervisor, the position he now holds.

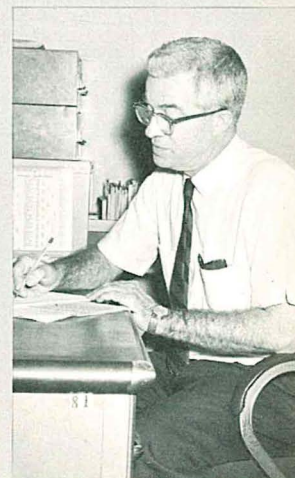
Ed lives with his wife and two sons at 1130 East Third Street in Mishawaka. He is a member of the Usher's Club at St. Bavo's Catholic Church. He was formerly active in the Mishawaka Junior Chamber of Commerce and the now-defunct Wheelabrator Credit Union.

George R. McNeile is now supervising engineer in the Special Applications Engineering Department. When he joined Wheelabrator in 1937 — 29 years ago — it was as a draftsman.

He transferred early in 1939 to the Experimental Engineering Department and a few years later to the Research Engineering Department.

In 1956, he was named assistant to the manager of special application engineering and in 1960 was named to his present position.

McNeile lives with his wife at 611 Peashway, South Bend. They have three daughters. He is a past chairman of the St. Joseph Valley Section of the American Society of Mechanical Engineers and is a trustee of St. Joseph's Catholic Church and a member of the St. Vincent DePaul Society.



GEORGE R. MC NEILE

WHAT "GOOD OLD DAYS"?

In any gathering of friends, someone, remembering a movie he saw or a book he read, will bring up "the good old days" and say, "Wouldn't it be fun if we still did thus-and-so- like they used to?" Granted, in some instances there's no arguing with him. It might be exciting, for example, to "roar" like they did in the Twenties.

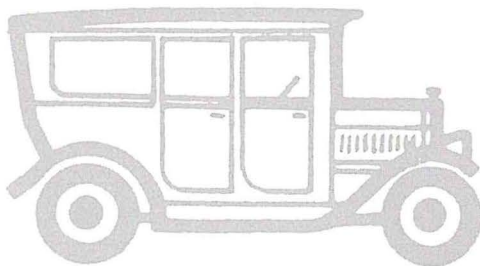
But it wouldn't be very exciting to return to the economy of the "good old days." It would, in fact, be a nuisance at best. Not so long ago — in good old 1946 to be exact — you could have bought a television set with a 10-inch screen . . . after paying \$375 for it. Today it's possible to get a 21-inch screen for half that price. And now we can even see our favorite programs in color if we want to buy a color set.

But let's stay with the Twenties for our time of study. No woman would want to be without a few pairs of stockings in her wardrobe today. Neither did the women of the Twenties. But they had to pay \$3 for a pair of hosiery that did not last as long and cost twice as much as the ones worn today. Investment in better tools and processes helped to bring the prices down for today's woman. The money for better tools and better processes came from profit dollars.

Let's take a look at the employee of the Twenties. If he worked 500 hours, he could buy a refrigerator. After 500 hours of work today, we can buy three, if we want them and these refrigerators are larger, more efficient and more convenient than the older models.

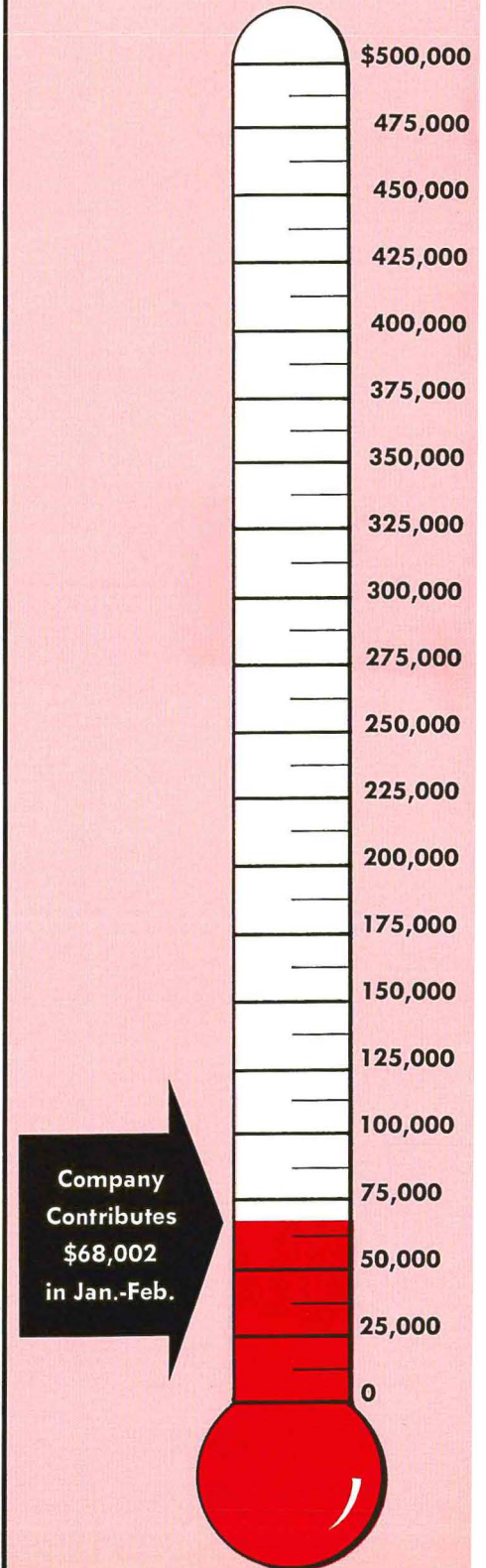
And finally, a man would have had to work 10,000 hours to buy a house in 1929. Today, 10,000 hours will pay for the mortgage on 1-1/3 average-sized houses. But, since it is not practical to buy a third of a house, we can buy bigger houses or use the extra money in many other ways.

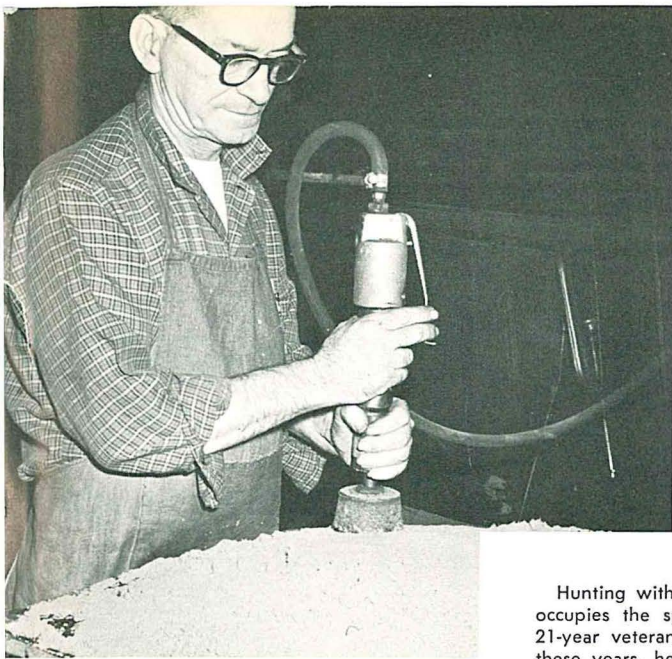
Go ahead and dream of the "good old days," or rather about *some* of their aspects. But remember, too, the "good nowadays" and be grateful for them. We've got these days because of our country's prosperity through profit. And we personally, together and as individuals, gain again through our company's profit sharing plan.



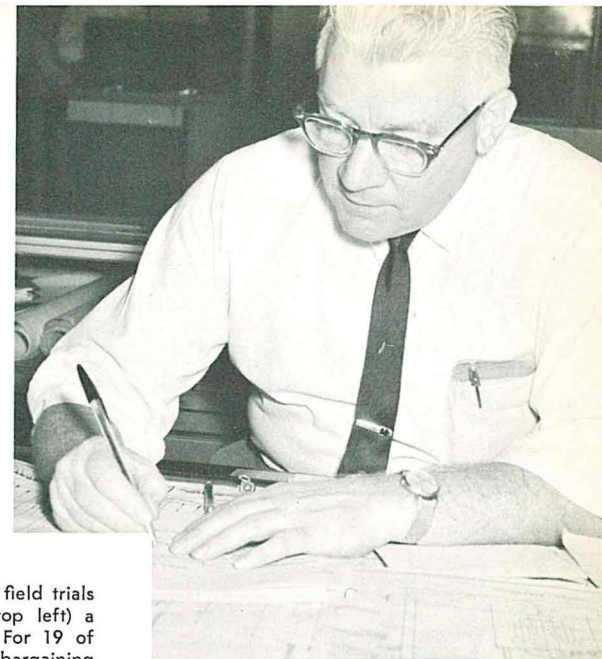
PROFIT-SHARING

We're Off to a Good Start!





ON THE JOB



Hunting with Beagles and running them in field trials occupies the spare time of **Calvin Kelley**, (top left) a 21-year veteran core maker in the Foundry. For 19 of these years, he has been a member of the bargaining committee of Local 995 UAW-AFL-CIO. Kelley and his wife live at 422 East Grove Street. They have two married children.

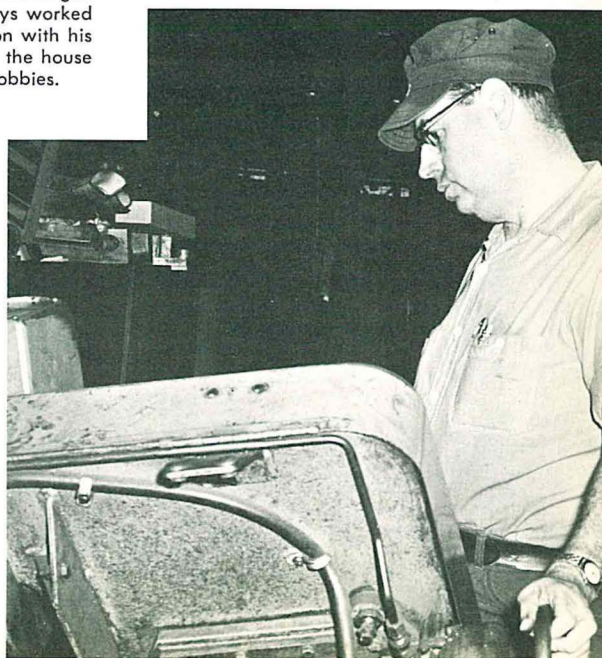
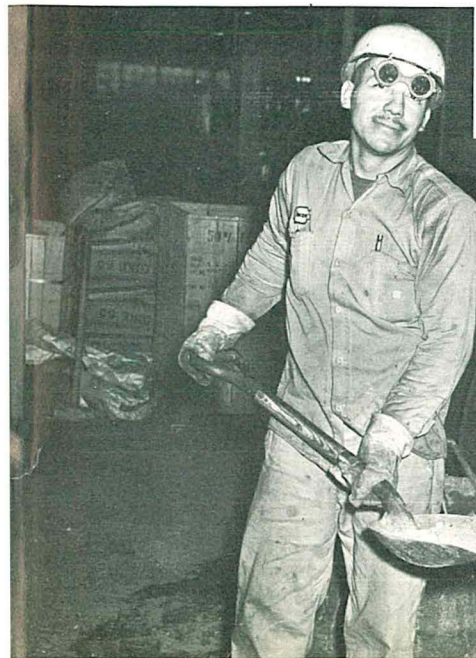
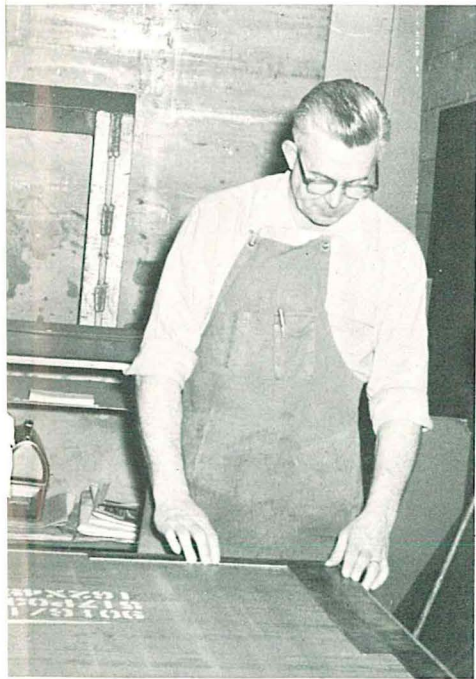
For 37 years, **Julius VanderBruggen** (top right) has been employed at Wheelabrator. He began as a blueprint boy and advanced through various clerical and engineering assignments to his present position as lead engineer in the Standard Blast Design section of the Engineering Department. He lives with his wife at 614 West 8th Street in Mishawaka where he likes to tend a vegetable garden in the summer. They have one son.

Class A layout work in the Steel Shop is done by **John V. Pawlowski** (left) who lives in Mishawaka with his wife and seven children. He joined Wheelabrator in 1941 and has spent most of the years since then in the fabrication section of the Steel Shop. Coin collecting and gardening on a small scale occupy his leisure time.

Robert J. Reihl (right) joined Wheelabrator in January of 1941. Until 1951 he worked in sheet metal fabrication. At that time he entered the maintenance section where he has remained ever since. A Group Leader, he is a maintenance man in the Steel Shop. Reihl lives in Mishawaka with his wife and four children.

Duane Gillam (bottom left) has held a number of different jobs in Plant 2 since he began working at Wheelabrator in 1953. He presently operates an electric melting furnace. Gillam lives in Cassopolis, Michigan, with his wife and eight children. His hobbies are hunting and fishing.

Dale L. Snyder (bottom right) is a power saw operator in the fabrication section of the Steel Shop. He began working at Wheelabrator in 1940 and has always worked in the Steel Shop. He lives at 427 West Jefferson with his wife and two children. Doing odd jobs around the house in winter and the yard in summer are his hobbies.



people AND events IN THE NEWS

Meetings, Institutes, Seminars, Conferences

Richard L. Adams, Chief Project Engineer for Dust and Fume Control Engineering, spoke during February at the 58th Annual American Institute of Chemical Engineers' meeting in Dallas, Texas. His presentation was "High Temperature Cloth Collectors for Kiln and Calcining Operations."

Also during February, **Gordon E. Medlock**, Sales Manager of the Lorco Division, spoke at the annual educational session of the Grand Rapids Branch of the

American Electroplaters' Society. His topic was "Technical Process and Application for Wet Blast Finishing."

"Demonstrations in Baghouse Design for Lead and Zinc Smelters," was the topic discussed by **William J. Jesernig**, Dust and Fume Control Project Engineer, at the March 2nd meeting of the Metallurgical Society of the AIME. The meeting was held at the Americana Hotel, New York City.

J. E. Donlan Named to USC Chairmanship

James E. Donlan, Vice President-Controller, has been named Chairman of the Corporate Division of United Community Services of St. Joseph County for

1966. In addition, he has been named to the Campaign Cabinet which is composed of leaders in all the UCS divisions.

E. A. Rich to Give Paper

E. A. Rich, Vice President, Balcrank Division, will give a technical paper on "Effects of Pulsating Coolant Pressures in Oil Hole Drills" at the 1966 Engineering Conference and Tool Exposition

sponsored by the American Society of Tool and Manufacturing Engineers. The conference and exposition will be held April 18-22 in Detroit's Cobo Hall.

F. J. Pichard Says "Thank You" to Friends

F. J. Pichard, Vice President of Marketing, wishes to say "Thank You" to his many friends at Wheelabrator who remembered him with cards and good wishes during his stay at Presbyterian

St. Luke's Hospital in Chicago for surgery and during his recovery at home. To him, we wish to say "It's good to have you back with us."

Promotions

James E. Donlan, Vice President and Controller, has announced the following organizational changes in the Controller's Division:

Cecil Millemon has become Billing Supervisor, assuming full responsibility for the billing operation of Wheelabrator and Balcrank Divisions. He is also responsible for review and enforcement of pricing policies.

Edward Huemmer has become

Payroll Department Supervisor. In this role he will devote full time to payroll and related matters.

Frank Romanker has been employed as Cost Department Manager. A C.P.A., Romanker brings to Wheelabrator many years of public and industrial accounting experience. He is responsible for the supervision of all cost accounting functions of the Company.

**Institute Honors
Jacob A. Schmidt, Jr.**

Jacob A. Schmidt, Jr., Vice President and Treasurer of The Wheelabrator Corporation, has been elected a member of the President's Council of the American Institute of Management. The Institute is a chartered not-

for-profit management research organization and its membership includes outstanding executives in the United States and abroad who have been selected for their achievement in the field of management.

New Employees

Machine Shop: Xavier R. DeBaets, Roger L. Coleman, James C. Elick, Jack N. Seider, Richard L. Mitchell, Eugene R. Kempner, Theodore D. Gearhart, Joseph W. Buczynski, Robert F. Frederick, George R. Kuechler, Sam I. Bair, Philip S. Jagodzinski, Gerald L. Sherk, Guy E. Nesbitt, David H. Shearer; **Stockroom** Kenneth L. Grise; **Material Handling:** Lloyd D. Burrow, Leo E. Byrd, Kelly H. Tucker, Elmo Perry, Stanley P. Hahn, Charles K. Moore, Jr., James R. Kite, Roger E. Gropp, Richard M. Plummer, Brooks D. O'Dell; **Fabrication:** Delbert C. Zellers, Herman L. Taber, Raymond E.

Johnson, Jessie A. Blackburn, Gervase E. Dosmann, Steven M. Horvath, Bobby J. Stricklin, Lewis P. Snyder; **Inspection:** Earl R. Witt, Richard J. Skiles, Ronald L. Holbert, Earl R. Reidenbach, Eddie R. Lee, Harry G. Eisele; **Plant Engineering:** Hoover Woods, Roy C. Butler; **Balcrank:** Elmer E. McGary, Thomas W. Crusham, William J. Klein, Wilson W. Zang, John E. Zeitler, William J. Rudolph, Dwight B. Ferguson, William C. Varnell; **Foundry:** Joseph D. Spite, Raymond J. Stoddard; **Billing:** Genevieve L. Bidlack; **Accounting:** Marilyn J. Causey, Kaye M. Berger; **Engineering:** Donald S. Hahn, Robert L. Isenbarger, Gerald L. Huffman, Joseph M. Chapo, Shirley A. Schneck, Richard L. VanSickle, Catherine L. Minegar, Linda A. Cook, Dennis L. Hixen-

baugh; **Production Control:** Ferenc Szabo, Richard A. Meyer, Helga A. Wells; **Sales:** Evelyn M. Fries, Gary F. Weil, Nancy L. Tubbs, John T. Saletta, Steven Marcus, Robert H. Kimble, Leona M. Blankenbaker, Virginia D. Myers, Gordon E. Vilsack, Leonard H. Morgan, Jr., James D. Miniea, George A. McGrookin, Francis P. Waxman, Dale R. Dustman, Jerry W. Maddern, Daniel F. Sullivan; **Assembly:** Martin Kocsis; **Office Services:** Kenneth W. Squires, William L. Pennington, Georgina Wullaert; **New York Office:** Loretta A. Cochran; **Cost:** Frank G. Romanker; **Marketing:** Joseph J. Janush, Arthur W. Mallory; **Plant 2 Production:** Timothy M. Sullivan, Daniel A. Burns, Ronald A. Montanari, Connie L. Sullivan, James A. Jernigan.

Anniversaries

30 Years

Bert E. Biggs..... Steel Shop
George O. Dubois..... Steel Shop
Margaret I. Sawyer..... Dust & Fume
Harry C. Hixenbaugh..... Engineering
Ray W. Hutchins..... Inspection
Harold R. Miles..... Inspection

25 Years

Joseph W. Arata..... Engineering
Howard W. Hull..... Parts Service
Raymond Breden..... Steel Shop
Lynn B. Bowers..... Steel Shop
Matthew J. Balint..... Machine Shop
Paul B. Brower..... Steel Shop

20 Years

Chalmer R. Cline
.....Assistant to the President

Philip R. Jordan..... Engineering
James H. Thomson..... Regional Mgr.
John A. Goss..... Steel Shop
Guerino S. Giacomini..... Shipping

15 Years

Loyd F. Jernigan..... Steel Shop
Issac F. Poff..... Plant 2
Juanita F. Young..... Sales
Herbert P. Hillebrand..... Steel Shop
Bernice Modracki..... Purchasing
Frank P. Urednick..... Steel Shop
Walter V. Schooley..... Steel Shop
Hazel M. Henderson..... Payroll
Walter M. Bailey..... Shipping
Peter Kalil..... Receiving
James R. Klowetter..... Engineering

10 Years

Robert H. Leliaert..... Personnel
Glen T. DeHaven..... Steel Shop
James W. Montgomery..... Demonstration

Kenneth E. Grove..... Steel Shop
Delores M. Burtsfield..... Production Manager's Office
Richard L. Conner..... Steel Shop
Albert E. Gilmer..... Steel Shop
Olive B. Hartung..... Export
Russell D. Mishler..... Steel Shop
June H. Schalliol..... Accounting
Truman F. Wesco..... Demonstration
William O. Farrell..... Material Handling
Herbert E. Weaver..... Steel Shop
John Forizs..... Steel Shop
Leo J. Howell..... Steel Shop
Frank J. Walker..... Sales
Clyde E. Hickman..... Production Control
John S. Robinson..... Field Sales
Marvin W. Tucker..... Machine Shop
Howard S. Biddle..... Machine Shop
Ronald J. Richardson..... Plant 2
Harold F. Hummel..... Steel Shop
Robert D. Paul..... Plant 2

Retirements

Roy W. Guite..... Engineering Dept.
Roy G. Carnal.....

Milferd T. Gardner..... Steel Shop
Plant 2

Members of the Engineering Department gathered to wish Roy W. Guite well when he retired in January after a career of over 30 years with Wheelabrator.

Former PARADE reporter, Milferd T. Gardner retired in February from the welding area of the Steel Shop. Co-workers presented him with luggage.

Co-workers in Plant 2 presented Roy G. Carnal with a watch when he retired in February. Roy was a ball mill operator at the time of his retirement.



PASSING

PARADE



The incorporation of Balcrank facilities in Mishawaka has meant the addition of many new faces to our Wheelabrator family. On behalf of PARADE, I want to welcome all new employees in the Balcrank, Machine Shop and Inspection departments. Since it is impossible for me to get around to talk to all new employees, I want to ask each of you to stop and tell me what you and your families are doing so that Passing Parade readers may know what you are doing . . . Congratulations are in order for Mr. and Mrs. **Philip Shapiro** who recently were blessed with their fourth child, a daughter Vicki. Phil works on the Brookins Line . . . **Charles Perri**, Inspection, and his wife Betty have a young son, Carl, who is doing very well as an accordionist. He has won many awards and recently formed a small band. Carl will be entering the Indiana State Talent Contest. We all wish him the best of luck in competition.

Tom VandeWalle
Balcrank, Machine Shop, Inspection

Spring has sprung — let's hope we've seen the last of old man winter! . . . Proud grandma **Esther Harley** has been attending horse shows lately. Her granddaughter, Barbara Lakovits, 10, participates in the jumping contests with her horse, Calico Kitty . . . A former employee, Nancy Mast Deon now resides in California where her husband is employed by Kaiser Steel Corp. . . . **Vicky Vanderbeke's** daughter, Pat, a sophomore at I.U. campus in South Bend, recently had the leading role in a children's play, "Green-sleeves." . . . This reporter will be leaving Wheelabrator when she gets married in June to Bill McCorkle of Wilmington, Delaware.

Pam Savadori, Engineering

To start with, we wish to compliment the winning team in the recently-completed Bowling Sweepstakes sponsored by the Athletic Association. It seems that the Methods and Planning department plus our welding engineer really came through with flying colors. The winners were **Sam Hearrell, Stewart Whitney, Jim Fogle, Russell Wade**, all of Methods and Planning and **John Vaseline**, welding engineer. Nice going, team . . . To **Gene Sobiech**, also of Methods and

Planning, we offer our congratulations for his achievements in the Sweepstakes. He won the all-events trophy . . . We wish **Helen Studdon**, of South Shipping, a very speedy recovery from her recent surgery . . . Our deepest sympathy is extended to **Gladys Warren**, of the Machine Shop, in the recent death of her husband . . . Our sympathies also to **Robert Gibbons**, of the Stockroom, and **Eugene Gibbons**, of the Machine Shop, in the recent death of their mother and to **Helen Leyes**, of North Shipping, in the recent death of her mother . . . **Bill Rapp** came in to bid us goodbye before he retired after 31 years of service with the company. Bill was foreman on the Tumblast line in the Steel Shop. To Bill, we say happy retirement.

Hildreth Boehnlein
Methods and Planning

Stanley Bober recently spent two weeks at Great Lakes with the Navy Reserves. He served as Recruit Petty Officer. Stan lives with his wife Betty Jane at 111½ Olive Street in Osceola . . . **George Roof** retired on February 25 after 11 years of service, coming here from Singer. George resides with his wife, Frieda, at 917 Roberts Street in River Park. His immediate plans are to spend at least a month at St. Petersburg, Florida. His favorite hobbies are photography and traveling . . . **Raymond (Doc) Knoll** was home for a week in February from an injury sustained on the job. Your reporter took the opportunity to visit him in his home and to extend sympathy to his wife who cared for him . . . **Gus Rudlaff** came back to work on February 21 after being off seven weeks because of surgery. Gus is active in Boy Scout work and lives at 1307 East Fourth Street . . . Glad to have **Lee Florea** back on the assembly line after a stay in Memorial Hospital for surgery and a few weeks at home for recovery . . . We miss **Bill Wagner**, a welder on sub-assembly who has been off work since late January. Bill underwent surgery and is now at home convalescing along with their dog, Teddy, who got hit by an automobile . . . The union steward in our department on the day shift is **Elmer Byrd**, who has been with Wheelabrator for 24 years. A trustee, he is active in other union affairs. He is also active

in Boy Scout work with his youngest son, Steve. Another son, **LeRoy**, is an electrician on the night shift and a son-in-law, **Pete Davis**, works the night shift on assembly.

Ralph Holdeman
Steel Shop, Assembly, Erection

Sandra, daughter of **Geraldine Englehart**, Purchasing, has been rewarded for her ardent hours of practice by winning trophies at baton twirling contests. This year, she has won two first place trophies in competition at LaPorte, a second place trophy at LaPorte, and a second place trophy at Lafayette. Last year she won first place in her age group in the Indiana State Contest. Altogether she has won 24 trophies and five medals. She is six years old . . . **Marie Lehman**, Purchasing, traveled by air to visit her daughter and son-in-law in California during the first week of April . . . **Myron Yoder**, Assistant Director of Purchases, returned to work late in March following surgery. Welcome back! . . . **C. W. Senkbeil**, Purchasing Agent, is building a new home in Kensington Farms and hopes that it will be completed soon. Mr. Senkbeil came from Cincinnati with the Balcrank Division. His wife will join him in South Bend when the home at 60980 Exeter Court is completed . . . **Patty Soens**, Cost, was surprised recently when her fiance, Ron Feyos, arrived at her home for a two-week furlough . . . **Bernice Modracki**, Purchasing, recently celebrated her 15th year with Wheelabrator. Hope that you will be with us many more years to come, Bernice . . . Director of Purchases **John Wright** was honored recently by being on the Sales Course Panel for the Dale Carnegie Course. Mr. Wright is also very active in the National Association of Purchasing Agents . . . **Delores Burtsfield** of the Production Manager's office plans to build a new home in Kensington Farms this year . . . The four J's + 1 bowling team is still in first place. The season's not over yet, but we hope our girls can continue to hold that lead. Team members are **Joan Schue, Jane Clements, Jo Wiendels, Jean Vergon** and **Mary Helen Driver**. Good Luck girls!

Ernestine Banes, Purchasing, Cost

CANADIAN CLASSICS

Mr. and Mrs. **Bob Campbell** recently enjoyed a well earned holiday in Naples, Florida. We understand there was a championship golf course right behind the hotel where they were staying and we hear that Bob broke "100" and the golfing weather was excellent . . . Our overworked Accounting Department, **John Foster, Gord**

Big Canoe and **Bill Wilkinson** have been spending so many evenings at the plant we thought they would be moving their beds in anytime. It finally looks as if relief is on the way though, as we have just hired Mrs. **Anne Mitchell** who will be looking after Accounts Payable and other allied work . . . **Doug Lamb** has been really working on this big DOSCO job and he and **Glen Erickson**, our Montreal based Project Engineer, are keeping a watchful eye on this project. We are all waiting expectantly to see how this interesting new process develops . . . **Gordon Dick**, Manager, Dust & Fume Division, is busy working on an article on Ultra Filtration. Gord is getting so good at this it wouldn't surprise us if he wrote a book one of these days . . . **Ed Stoltz** and family are presently enjoying a holiday in Scotland and are making a few side trips to various points of interest . . . The truck strike hasn't bothered us too much as far as shipments coming in and going out of the warehouse are concerned. I don't know where **Sid Wilkinson** finds these independent truckers but he certainly does a good job . . . **Beryl Hatch**, Accounting, is determined that this is the year she is going to get her drivers license. She is really studying her questions and answers and it won't be long before she will be driving. We are all keeping our fingers crossed and hope that she gets it . . . Looks as if we might have some spring weather after all. Perhaps **Clayton Dinger** can start polishing those new Wilson Staffs of his. I understand some of the real ardent golfers in Mishawaka were out in late February . . . We hear that **Gail DUBray's** husband has started out in his own business and we all wish him well in this new venture. Perhaps, Gail, you will be driving a new Corvette before long . . . Lorna Ross, eldest daughter of **Bob Ross**, Purchasing, has accepted a position of Home Ec teacher at a high school in Fort Francis, Ontario. It must be she still wants to be within driving distance of her boy friend who still has one year to go at University . . . Well that's about it for this issue, and as Lowell Thomas would say "so long until the next time".

Bob Ross, Canada

The bright light shining in the lobby these days is caused by the glow in **Jody Daffron's** eyes. Recently she received a diamond from Joseph M. Cocquyt. Congratulations to the lucky fellow and best wishes to you, Jody . . . **Pat Stoeckinger's** son, Jerry, arrived in Chicago from Los Angeles recently to present a technical paper at the Welding Convention. He also spent a day in South Bend with his proud parents . . . **Ann Leyes** has left

the switchboard to prepare for a stay in Europe. Bon voyage, Ann . . . The Spanish accent heard in files is due to the arrival of **Leslie Cordell**. Leslie has joined files after living in Mexico City . . . Files also has another new face, **Gina Wullaert** . . . Other new faces in office services are **Pat Amato** on the switchboard.

Emma Arnold, Office Services

In a recent union election, **Gilbert Bair**, Layout, was chosen as one of the delegates to the union convention in Long Beach, California. Have a good trip, Gilbert, and bring back a good report . . . Rev. **Wilbur Boyer**, Layout, does a considerable amount of evangelistic work in the area. The first Sunday in April, he held services at the Indiana State Reformatory at Pendleton. He has been holding services in area jails for several years . . . We extend our sympathies to the following: **Rueben Barrier** in the death of his father; **James Newton** in the death of an infant son and **Earl Daily** in the death of his mother . . . **Nelson Kinney**, Blacksmith, has returned from an early vacation trip to Florida . . . A number of Steel Shop employees have purchased new automobiles recently. **Willie Boyer**, Layout, is the proud owner of a new Ford. **Bill Geist**, Welding foreman, has purchased a new Chevrolet . . . And rumor has it that **Elmer Mast**, Cabinet Setup, is sporting a new Buick wagon . . . **Al Hartz**, second shift Layout, has been in the hospital for surgery . . . This reporter has the dubious distinction of being elected president of the Michiana Jayhawkers Association. This group consists of former Kansas residents now living in our area. Each summer the group has a reunion. Anyone who is from Kansas, or knows of someone who is a former Kansas resident should contact me . . . A former Steel Shop employee, **John J. Harris, Jr.**, has been chosen to fill a responsible opening in the front office. All of the Steel Shop employees wish John best wishes in his new position . . . It seems that many Wheelabrator employees have picked up free copies of "Index" magazine in various spots around the Michiana area. How many of you realize, however, that this

magazine is published by the son of **Ray "Pappy" Breden**, veteran Steel Shop Layout man? He brings in a good supply of "Index" each month. If you haven't read it yet, why not ask him for your copy?

Fred Beals
Steel Shop Layout, Fabrication

For those who have not seen **Margaret Dakin**, Order Department, lately, the stars in her eyes and the diamond on her left hand seem to shine equally bright. The young man in her thoughts is Thomas Rowell of Notasulga, Alabama. They met when she took a trip to the South about a year ago. After pondering on many different dates, they have now decided on July 23 . . . **Martha Heston**, of Parts Service, warns us to beware of her young son, Phillip, (17-years-old) who just got his driver's license . . . We do not believe we have formally welcomed **Blanche Harden**, and **Nancy Tubbs**, both of Order Department, and **Virginia Myers**, Parts Service, to the fold. Welcome girls and we hope you like us . . . **Nancy Tubbs** was quite elated the other day when she got her new car, a mist blue Chevrolet Impala. So, please be careful out there in the parking lot, don't scratch it for a while at least . . . **Helen LaDow's** father had been quite ill for sometime and in January passed away. We know you miss him greatly, Helen . . . **Mary LeMon** and **Bob Schalliol**, both of Advertising, were especially proud when they attended a program at which Mary's son, Dick, and Bob's son, Charles, were inducted into the National Honor Society. Both boys are seniors at Mishawaka High School. Mary's son will attend Western Michigan University in the Fall. Bob's son will be going to Indiana University at Bloomington on a scholarship awarded him as winner of an American Legion zone speech contest in Gary in February . . . **John Saletta**, Abrasive Department, was beaming all over the place on Washington's Birthday, but not because it was Washington's Birthday but that of his third son, Steven Thomas. Couldn't it be that he will become famous, too? Perhaps — who knows.

Eleanor Rea, Sales

Julianna Club members presented Carol Mammolenti with a number of gifts before she left the Customer Service Department in February to await the arrival of her first child.



for your information


At least once every three years employees should check their Social Security account for accuracy directly with the Social Security Administration in Baltimore. This is very important since errors in earnings must be corrected within 39½ months after the year in which the wages were paid. If the records are not corrected by that time, your benefits when you retire or become disabled will be based on inaccurate lifetime earnings.

The Social Security Administration provides a special form to use when requesting a statement of your account. This form, number OAR-7004, is always available at your local Social Security office. For your convenience, however, we are reproducing the card on this page. You may clip it out and mail it directly to the Social Security Administration to check your account.

When completing the form you may also re-

quest an estimate of the benefit for which you will qualify upon retirement, if you wish. To obtain this estimate, write, "Benefit Estimate", at the top of the form. The Social Security Administration will advise your local office of your situation and they, in turn, will give you your estimated benefit.

Here are a few points to remember about the statement of earnings you will receive from the Administration: Your earnings from 1937 through 1950, if any, will be shown as a lump sum. Earnings from 1951 on will be listed on an annual basis. To check the records, simply compare the total shown for each year to the total earnings shown on your copies of the W-2 forms with which we are all familiar. You needn't bother to check any further back than three years, remember, because the Social Security Administration cannot make changes after more than 39½ months have elapsed.



**REQUEST FOR
STATEMENT
OF EARNINGS**

ACCOUNT NUMBER →

--	--	--

DATE OF BIRTH →

MONTH	DAY	YEAR
-------	-----	------

Please send me a statement of the amount of earnings recorded in my social security account.

NAME { MISS _____
MRS. _____
MR. _____ } Print
Name
and
Address
In Ink
Or Use
Type-
writer

STREET & NUMBER _____

CITY & STATE _____ ZIP CODE _____

SIGN YOUR NAME AS YOU USUALLY WRITE IT _____

Sign your own name only. Under the law, information in your social security record is confidential and anyone who signs someone else's name can be prosecuted.
If your name has been changed from that shown on your social security account number card, please copy your name below exactly as it appears on that card.

To obtain a statement of earnings, simply complete the form appearing on this page, clip it and paste firmly to a postcard. **Do not insert it in an envelope.** Mail to: Social Security Administration, P. O. Box 57, Baltimore, Maryland 21203.